

## Test Report

No. SHAEC1016826801

Date: 03 Dec 2010

Page 1 of 15


3M CHINA LIMITED

222# TIAN LIN ROAD, SHANGHAI (200239)

The following sample(s) was/were submitted and identified on behalf of the clients as : 3M Label Material

SGS Job No. : SP10-038714 - SH  
Model No. : 7847  
Sample May Cover : 7881,7887,7880,7883HL,7000,7812,3922,7815,7816,7818,7875,FVS110S,7600,  
7613,7291,7737FL,7381,7380,7871,7872,7861,7218SA,L8001  
Date of Sample Received : 22 Nov 2010  
Testing Period : 22 Nov 2010 - 03 Dec 2010  
Test Requested : Selected test(s) as requested by client.  
Test Method : Please refer to next page(s).  
Test Results : Please refer to next page(s).

Signed for and on behalf of  
SGS-CSTC Ltd.



Fan Jingjie, JJ  
Approved Signatory

This document is issued by the Company subject to its General Conditions of Service printed overleaf, available on request or accessible at [http://www.sgs.com/terms\\_and\\_conditions.htm](http://www.sgs.com/terms_and_conditions.htm) and, for electronic format documents, subject to Terms and Conditions for Electronic Documents at [www.sgs.com/terms\\_e-document.htm](http://www.sgs.com/terms_e-document.htm). Attention is drawn to the limitation of liability, indemnification and jurisdiction issues defined therein. Any holder of this document is advised that information contained hereon reflects the Company's findings at the time of its intervention only and within the limits of Client's instructions, if any. The Company's sole responsibility is to its Client and this document does not exonerate parties to a transaction from exercising all their rights and obligations under the transaction documents. This document cannot be reproduced except in full, without prior written approval of the Company. Any unauthorized alteration, forgery or falsification of the content or appearance of this document is unlawful and offenders may be prosecuted to the fullest extent of the law. Unless otherwise stated the results shown in this test report refer only to the sample(s) tested.

# Test Report

No. SHAEC1016826801

Date: 03 Dec 2010

Page 2 of 15

Test Results :

Test Part Description :

Specimen No.	SGS Sample ID	Description
1	SHA10-168268.001	Black/white soft solid sheet with adhesive

Remarks :

- (1) 1 mg/kg = 1 ppm = 0.0001%
- (2) MDL = Method Detection Limit
- (3) ND = Not Detected ( < MDL )
- (4) "-" = Not Regulated

**Asbestos**

Test Method : With reference to NIOSH 9002:1994; ISO/DIS 22262-1. Analysis was performed by Polarized light microscope (PLM).

<u>Test Item(s)</u>	<u>CAS NO</u>	<u>Unit</u>	<u>MDL</u>	<u>001</u>
Actinolite	077536-66-4	%	1	Negative
Amosite	012172-73-5	%	1	Negative
Anthophyllite	077536-67-5	%	1	Negative
Chrysotile	012001-29-5	%	1	Negative
Crocidolite	012001-28-4	%	1	Negative
Tremolite	077536-68-6	%	1	Negative

Notes :

- 1. Negative = < 1% (w/w), Positive = ≥ 1 % (w/w)

**Halogen**

Test Method : With reference to EN 14582: 2007, analysis was performed by Ion Chromatograph (IC).

<u>Test Item(s)</u>	<u>Unit</u>	<u>MDL</u>	<u>001</u>
Fluorine (F)	mg/kg	50	ND
Chlorine (Cl)	mg/kg	50	108
Bromine (Br)	mg/kg	50	ND
Iodine (I)	mg/kg	50	ND

This document is issued by the Company subject to its General Conditions of Service printed overleaf, available on request or accessible at [http://www.sgs.com/terms\\_and\\_conditions.htm](http://www.sgs.com/terms_and_conditions.htm) and for electronic format documents, subject to Terms and Conditions for Electronic Documents at [www.sgs.com/terms\\_e-document.htm](http://www.sgs.com/terms_e-document.htm). Attention is drawn to the limitation of liability, indemnification and jurisdiction issues defined therein. Any holder of this document is advised that information contained hereon reflects the Company's findings at the time of its intervention only and within the limits of Client's instructions, if any. The Company's sole responsibility is to its Client and this document does not exonerate parties to a transaction from exercising all their rights and obligations under the transaction documents. This document cannot be reproduced except in full, without prior written approval of the Company. Any unauthorized alteration, forgery or falsification of the content or appearance of this document is unlawful and offenders may be prosecuted to the fullest extent of the law. Unless otherwise stated the results shown in this test report refer only to the sample(s) tested.

**Element(s)**

Test Method : With reference to US EPA Method 3052:1996, analysis was performed by ICP-OES.

<u>Test Item(s)</u>	<u>Unit</u>	<u>MDL</u>	<u>001</u>
Antimony (Sb)	mg/kg	10	ND

**Organic-tin compounds**

Test Method : With reference to ISO 17353: 2004 with carbamate, analysis was performed by GC-MS.

<u>Test Item(s)</u>	<u>Unit</u>	<u>MDL</u>	<u>001</u>
Triphenyl tin (TPT)	mg/kg	0.5	ND
Tributyl tin (TBT)	mg/kg	0.5	ND
Tributyl Tin Oxide (TBTO) ♦	mg/kg	0.5	ND

Notes :

- (1) Organostannic compounds Reference Information: Entry 20 of Regulation (EC) No 552/2009 and 276/2010 amending Annex XVII of REACH Regulation (EC) No 1907/2006 (previously restricted under Directive 2002/62/EC and 2009/425/EC)
  - (a) Shall not be placed on the market, or used, as substances or in mixtures where the substance or mixture is acting as biocide in free association paint.
  - (b) Shall not be placed on the market, or used, as substances or in mixtures where the substance or mixture acts as biocide to prevent the fouling by micro-organisms, plants or animals of:
    - (b-1) all craft irrespective of their length intended for use in marine, coastal, estuarine and inland waterways and lakes;
    - (b-2) cages, floats, nets and any other appliances or equipment used for fish or shellfish farming;
    - (b-3) any totally or partly submerged appliance or equipment.
  - (c) Shall not be placed on the market, or used, as substances or in mixtures where the substance or mixture is intended for use in the treatment of industrial waters.
  - (d) TBT and TPT compounds shall not be used after 1 July 2010 in articles where the concentration in the article, or part thereof, is greater than the equivalent of 0.1% by weight of tin; otherwise, articles shall not be placed on the market.
  - (e) DBT compounds shall not be used after 1 January 2012 in mixtures and articles for supply to the general public where the concentration in the mixture or the article, or part thereof, is greater than the equivalent of 0.1% by weight of tin; otherwise, articles and mixtures shall not be placed on the market.
  - (f) DOT compounds shall not be used after 1 January 2012 in some textile, childcare article etc.

This document is issued by the Company subject to its General Conditions of Service printed overleaf, available on request or accessible at [http://www.sgs.com/terms\\_and\\_conditions.htm](http://www.sgs.com/terms_and_conditions.htm) and for electronic format documents, subject to Terms and Conditions for Electronic Documents at [www.sgs.com/terms\\_e-document.htm](http://www.sgs.com/terms_e-document.htm). Attention is drawn to the limitation of liability, indemnification and jurisdiction issues defined therein. Any holder of this document is advised that information contained hereon reflects the Company's findings at the time of its intervention only and within the limits of Client's instructions, if any. The Company's sole responsibility is to its Client and this document does not exonerate parties to a transaction from exercising all their rights and obligations under the transaction documents. This document cannot be reproduced except in full, without prior written approval of the Company. Any unauthorized alteration, forgery or falsification of the content or appearance of this document is unlawful and offenders may be prosecuted to the fullest extent of the law. Unless otherwise stated the results shown in this test report refer only to the sample(s) tested.



for supply to, or use by, the general public, where the concentration in the article, or part thereof, is greater than the equivalent of 0.1% by weight of tin; otherwise, articles shall not be placed on the market.

Please refer to Regulation (EC) No 552/2009 and 276/2010 to get more detail information.

(2) ♦Tributyl Tin Oxide ([ (C4H9)3Sn ] 2 O ) : Calculate from Tributyl Tin content by multiplying 1.0276

**Phthalates**

Test Method : With reference to ASTM D 3421: 1975, analysis was performed by GC-MS.

<u>Test Item(s)</u>	<u>Unit</u>	<u>MDL</u>	<u>001</u>
Dibutyl Phthalate (DBP)	%	0.003	ND
Benzylbutyl Phthalate (BBP)	%	0.003	ND
Bis-(2-ethylhexyl) Phthalate (DEHP)	%	0.003	ND
Diisononyl Phthalate (DINP)	%	0.01	ND
Di-n-octyl Phthalate (DNOP)	%	0.003	ND
Diisodecyl Phthalate (DIDP)	%	0.01	ND
Diisobutyl Phthalate (DIBP)	%	0.003	ND
Di-n-hexyl phthalate (DnHP)	%	0.003	ND

**Glycol ether content**

Test Method : With reference to US EPA method 3550C:2007. Analysis was performed by GC-MS

<u>Test Item(s)</u>	<u>CAS NO</u>	<u>Unit</u>	<u>MDL</u>	<u>001</u>
EGME	109-86-4	mg/kg	5	ND
EGEE	110-80-5	mg/kg	5	ND

**Formaldehyde**

Test Method : With reference to ISO 17226-1: 2008, analysis was performed by HPLC-DAD.

<u>Test Item(s)</u>	<u>Unit</u>	<u>MDL</u>	<u>001</u>
Formaldehyde	mg/kg	10	ND

**Mirex**

This document is issued by the Company subject to its General Conditions of Service printed overleaf, available on request or accessible at [http://www.sgs.com/terms\\_and\\_conditions.htm](http://www.sgs.com/terms_and_conditions.htm) and for electronic format documents, subject to Terms and Conditions for Electronic Documents at [www.sgs.com/terms\\_e-document.htm](http://www.sgs.com/terms_e-document.htm). Attention is drawn to the limitation of liability, indemnification and jurisdiction issues defined therein. Any holder of this document is advised that information contained hereon reflects the Company's findings at the time of its intervention only and within the limits of Client's instructions, if any. The Company's sole responsibility is to its Client and this document does not exonerate parties to a transaction from exercising all their rights and obligations under the transaction documents. This document cannot be reproduced except in full, without prior written approval of the Company. Any unauthorized alteration, forgery or falsification of the content or appearance of this document is unlawful and offenders may be prosecuted to the fullest extent of the law. Unless otherwise stated the results shown in this test report refer only to the sample(s) tested.



## Test Report

No. SHAEC1016826801

Date: 03 Dec 2010

Page 5 of 15

Test Method : With reference to US EPA 8081B: 2007, analysis was performed by GC-MS.

<u>Test Item(s)</u>	<u>CAS_NO</u>	<u>Unit</u>	<u>MDL</u>	<u>001</u>
Mirex	002385-85-5	mg/kg	5	ND

### Hexabromocyclododecane (HBCDD)

Test Method : With reference to US EPA 3550C: 2007, analysis was performed by GC-MS.

<u>Test Item(s)</u>	<u>Unit</u>	<u>MDL</u>	<u>001</u>
Hexabromocyclododecane (HBCDD)	mg/kg	10	ND

### PFOS (Perfluorooctane Sulfonates) and PFOA (Perfluorooctanoic Acid)

Test Method : With reference to US EPA 3550C: 2007, analysis was performed by HPLC-MS.

<u>Test Item(s)</u>	<u>Unit</u>	<u>MDL</u>	<u>001</u>
Perfluorooctane Sulfonates (PFOS) and related Acid, Metal Salt and Amide	mg/kg	10	ND
Perfluorooctyl Acid (PFOA)	mg/kg	10	ND

#### Notes :

- (1) PFOS Reference Information: Entry 53 of Regulation (EC) No 552/2009 amending Annex XVII of REACH Regulation (EC) No 1907/2006 (previously restricted under Directive 2006/122/EC)
  - (i) May not be placed on the market or used as a substance or constituent of preparations in a concentration equal to or higher than 0.005 % by mass.
  - (ii) May not be placed on the market in semi-finished products or articles, or parts thereof, if the concentration of PFOS is equal to or higher than 0.1 % by mass calculated with reference to the mass of structurally or microstructurally distinct parts that contain PFOS or, for textiles or other coated materials, if the amount of PFOS is equal to or higher than 1 $\mu$ g /m<sup>2</sup> of the coated material. Please refer to Regulation (EC) No 552/2009 to get more detail information

### Azo Dyes

Test Method : Textile: According to EN 14362-1:2003 - Analysis was conducted with GC-MS/HPLC-DAD.

<u>Test Item(s)</u>	<u>CAS_NO</u>	<u>Unit</u>	<u>MDL</u>	<u>001</u>
4-Aminobiphenyl	92-67-1	mg/kg	5	ND

This document is issued by the Company subject to its General Conditions of Service printed overleaf, available on request or accessible at [http://www.sgs.com/terms\\_and\\_conditions.htm](http://www.sgs.com/terms_and_conditions.htm) and for electronic format documents, subject to Terms and Conditions for Electronic Documents at [www.sgs.com/terms\\_e-document.htm](http://www.sgs.com/terms_e-document.htm). Attention is drawn to the limitation of liability, indemnification and jurisdiction issues defined therein. Any holder of this document is advised that information contained hereon reflects the Company's findings at the time of its intervention only and within the limits of Client's instructions, if any. The Company's sole responsibility is to its Client and this document does not exonerate parties to a transaction from exercising all their rights and obligations under the transaction documents. This document cannot be reproduced except in full, without prior written approval of the Company. Any unauthorized alteration, forgery or falsification of the content or appearance of this document is unlawful and offenders may be prosecuted to the fullest extent of the law. Unless otherwise stated the results shown in this test report refer only to the sample(s) tested.



# Test Report

No. SHAEC1016826801

Date: 03 Dec 2010

Page 6 of 15

<u>Test Item(s)</u>	<u>CAS NO</u>	<u>Unit</u>	<u>MDL</u>	<u>001</u>
Benzidine	92-87-5	mg/kg	5	ND
4-chloro-o-toluidine	95-69-2	mg/kg	5	ND
2-naphtylamine	91-59-8	mg/kg	5	ND
o-aminoazotoluene	97-56-3	mg/kg	5	ND
5-nitro-o-toluidine / 2-Amino-4-nitrotoluene	99-55-8	mg/kg	5	ND
4-chloroaniline	106-47-8	mg/kg	5	ND
4-methoxy-m-phenylenediamine / 2,4-Diaminoanisole	615-05-4	mg/kg	5	ND
4,4'-diaminodiphenylmethane	101-77-9	mg/kg	5	ND
3,3'-dichlorobenzidine	91-94-1	mg/kg	5	ND
3,3'-dimethoxybenzidine	119-90-4	mg/kg	5	ND
3,3'-dimethylbenzidine	119-93-7	mg/kg	5	ND
3,3'-Dimethyl-4,4'-diaminodiphe nylmethane / 4,4'-methylenedi-o-toluidine	838-88-0	mg/kg	5	ND
p-cresidine	120-71-8	mg/kg	5	ND
4,4'-methylene-bis- (2-chloroaniline)	101-14-4	mg/kg	5	ND
4,4'-oxydianiline	101-80-4	mg/kg	5	ND
4,4'-thiodianiline	139-65-1	mg/kg	5	ND
o-toluidine	95-53-4	mg/kg	5	ND
4-methyl-m-phenylenediamine / 2,4-Toluylendiamine	95-80-7	mg/kg	5	ND
2,4,5-trimethylaniline	137-17-7	mg/kg	5	ND
4-aminoazobenzene	60-09-3	mg/kg	5	ND
O-Anisidine	90-04-0	mg/kg	5	ND
2,4-Xylidine	95-68-1	mg/kg	5	ND
2,6-Xylidine	87-62-7	mg/kg	5	ND

## Conclusion

\*\*

## Notes :

- (1) Test result for 4-aminoazobenzene (CAS no.: 60-09-3) is considered as "not detected" (i.e. <5mg/kg) since both aniline and/or 1,4-phenylenediamine is not found (i.e. <5mg/kg) by mentioned test method

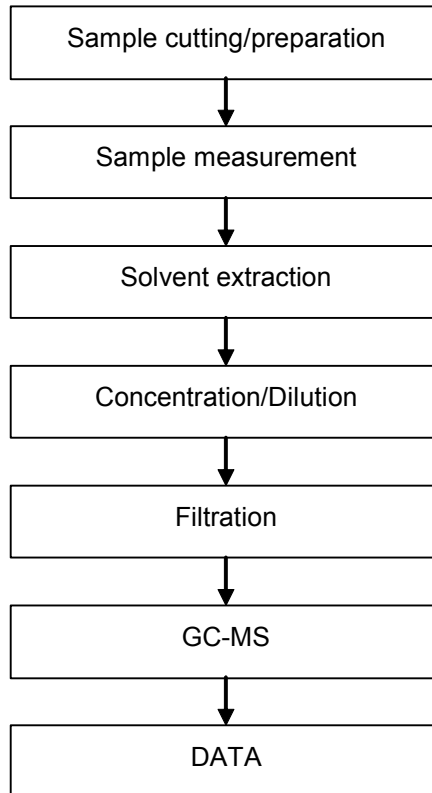
This document is issued by the Company subject to its General Conditions of Service printed overleaf, available on request or accessible at [http://www.sgs.com/terms\\_and\\_conditions.htm](http://www.sgs.com/terms_and_conditions.htm) and, for electronic format documents, subject to Terms and Conditions for Electronic Documents at [www.sgs.com/terms\\_e-document.htm](http://www.sgs.com/terms_e-document.htm). Attention is drawn to the limitation of liability, indemnification and jurisdiction issues defined therein. Any holder of this document is advised that information contained hereon reflects the Company's findings at the time of its intervention only and within the limits of Client's instructions, if any. The Company's sole responsibility is to its Client and this document does not exonerate parties to a transaction from exercising all their rights and obligations under the transaction documents. This document cannot be reproduced except in full, without prior written approval of the Company. Any unauthorized alteration, forgery or falsification of the content or appearance of this document is unlawful and offenders may be prosecuted to the fullest extent of the law. Unless otherwise stated, the results shown in this test report refer only to the sample(s) tested.



**ATTACHMENTS**

**Phthalates Testing Flow Chart**

- 1) Name of the person who made testing: Vickey Gui
- 2) Name of the person in charge of testing: Susan Liu

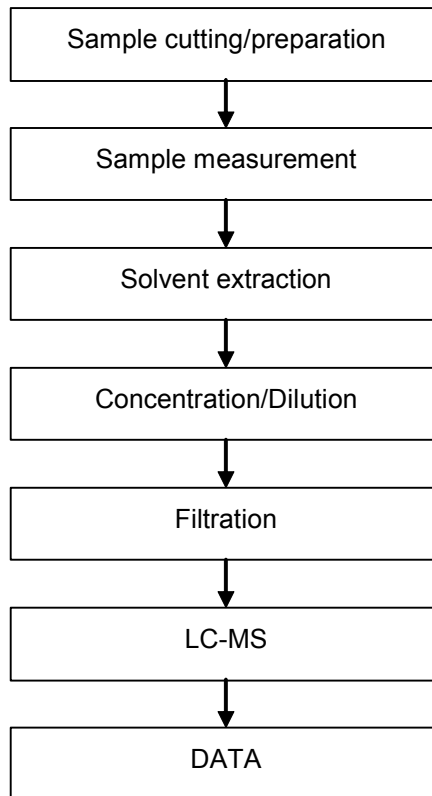


This document is issued by the Company subject to its General Conditions of Service printed overleaf, available on request or accessible at [http://www.sgs.com/terms\\_and\\_conditions.htm](http://www.sgs.com/terms_and_conditions.htm) and for electronic format documents, subject to Terms and Conditions for Electronic Documents at [www.sgs.com/terms\\_e-document.htm](http://www.sgs.com/terms_e-document.htm). Attention is drawn to the limitation of liability, indemnification and jurisdiction issues defined therein. Any holder of this document is advised that information contained hereon reflects the Company's findings at the time of its intervention only and within the limits of Client's instructions, if any. The Company's sole responsibility is to its Client and this document does not exonerate parties to a transaction from exercising all their rights and obligations under the transaction documents. This document cannot be reproduced except in full, without prior written approval of the Company. Any unauthorized alteration, forgery or falsification of the content or appearance of this document is unlawful and offenders may be prosecuted to the fullest extent of the law. Unless otherwise stated the results shown in this test report refer only to the sample(s) tested.



## PFOS/PFOA Testing Flow Chart

- 1) Name of the person who made testing: Judy Li
- 2) Name of the person in charge of testing: Nancy Du



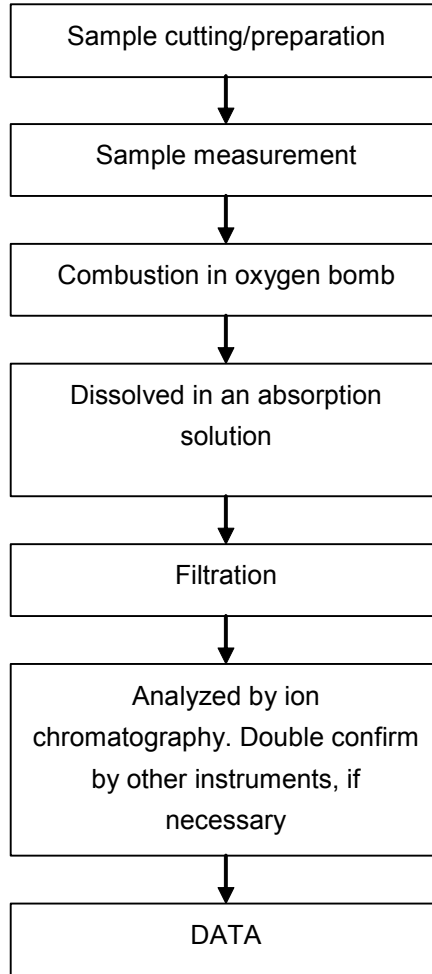
This document is issued by the Company subject to its General Conditions of Service printed overleaf, available on request or accessible at [http://www.sgs.com/terms\\_and\\_conditions.htm](http://www.sgs.com/terms_and_conditions.htm) and for electronic format documents, subject to Terms and Conditions for Electronic Documents at [www.sgs.com/terms\\_e-document.htm](http://www.sgs.com/terms_e-document.htm). Attention is drawn to the limitation of liability, indemnification and jurisdiction issues defined therein. Any holder of this document is advised that information contained hereon reflects the Company's findings at the time of its intervention only and within the limits of Client's instructions, if any. The Company's sole responsibility is to its Client and this document does not exonerate parties to a transaction from exercising all their rights and obligations under the transaction documents. This document cannot be reproduced except in full, without prior written approval of the Company. Any unauthorized alteration, forgery or falsification of the content or appearance of this document is unlawful and offenders may be prosecuted to the fullest extent of the law. Unless otherwise stated the results shown in this test report refer only to the sample(s) tested.



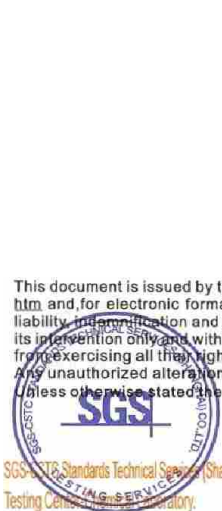


**Halogen Testing Flow Chart**

- 1) Name of the person who made testing: Daisy Gong
- 2) Name of the person in charge of testing: Alex Jiang

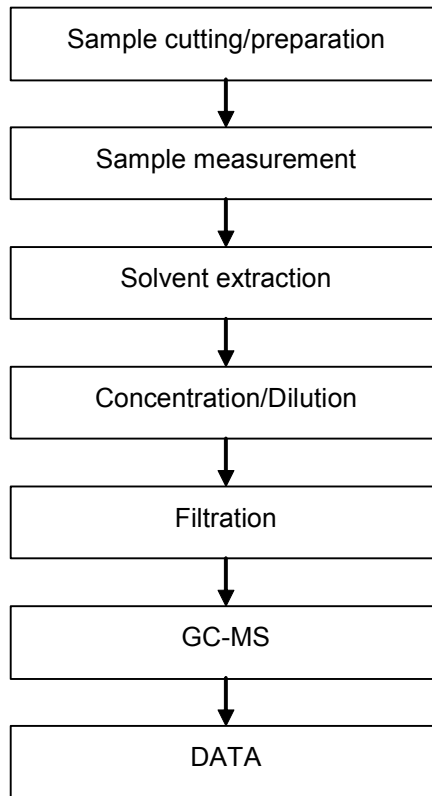


This document is issued by the Company subject to its General Conditions of Service printed overleaf, available on request or accessible at [http://www.sgs.com/terms\\_and\\_conditions.htm](http://www.sgs.com/terms_and_conditions.htm) and for electronic format documents, subject to Terms and Conditions for Electronic Documents at [www.sgs.com/terms\\_e-document.htm](http://www.sgs.com/terms_e-document.htm). Attention is drawn to the limitation of liability, indemnification and jurisdiction issues defined therein. Any holder of this document is advised that information contained hereon reflects the Company's findings at the time of its intervention only and within the limits of Client's instructions, if any. The Company's sole responsibility is to its Client and this document does not exonerate parties to a transaction from exercising all their rights and obligations under the transaction documents. This document cannot be reproduced except in full, without prior written approval of the Company. Any unauthorized alteration, forgery or falsification of the content or appearance of this document is unlawful and offenders may be prosecuted to the fullest extent of the law. Unless otherwise stated the results shown in this test report refer only to the sample(s) tested.



**HBCDD Testing Flow Chart**

- 1) Name of the person who made testing: Bill Zhong
- 2) Name of the person in charge of testing: Susan Liu

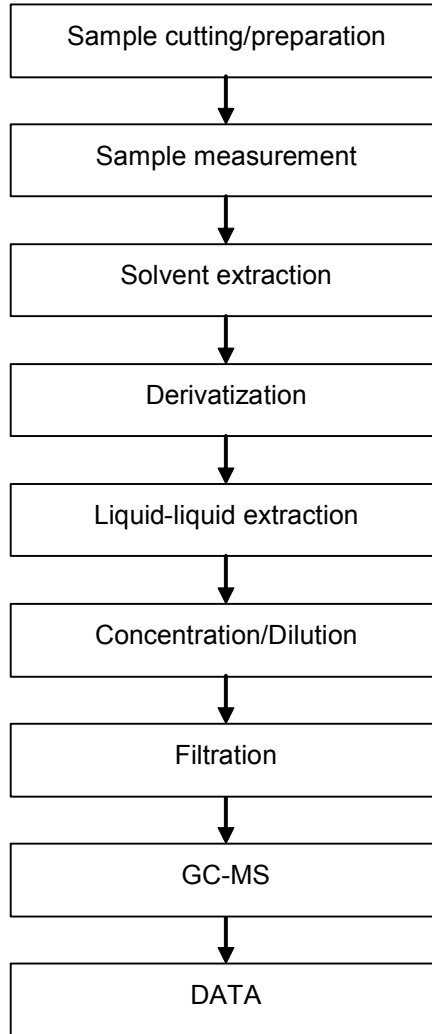


This document is issued by the Company subject to its General Conditions of Service printed overleaf, available on request or accessible at [http://www.sgs.com/terms\\_and\\_conditions.htm](http://www.sgs.com/terms_and_conditions.htm) and for electronic format documents, subject to Terms and Conditions for Electronic Documents at [www.sgs.com/terms\\_e-document.htm](http://www.sgs.com/terms_e-document.htm). Attention is drawn to the limitation of liability, indemnification and jurisdiction issues defined therein. Any holder of this document is advised that information contained hereon reflects the Company's findings at the time of its intervention only and within the limits of Client's instructions, if any. The Company's sole responsibility is to its Client and this document does not exonerate parties to a transaction from exercising all their rights and obligations under the transaction documents. This document cannot be reproduced except in full, without prior written approval of the Company. Any unauthorized alteration, forgery or falsification of the content or appearance of this document is unlawful and offenders may be prosecuted to the fullest extent of the law. Unless otherwise stated the results shown in this test report refer only to the sample(s) tested.

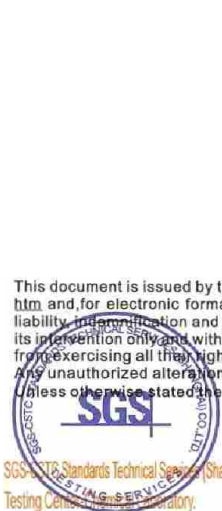


**Organotin Testing Flow Chart**

- 1) Name of the person who made testing: Jessi Zhu
- 2) Name of the person in charge of testing: Tracy Yue

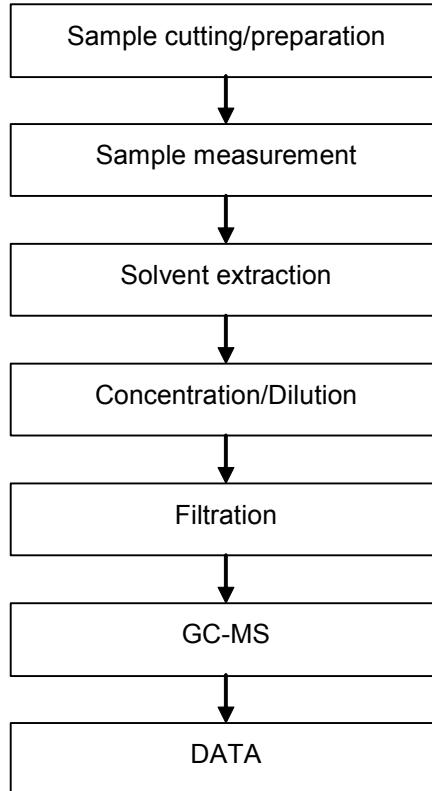


This document is issued by the Company subject to its General Conditions of Service printed overleaf, available on request or accessible at [http://www.sgs.com/terms\\_and\\_conditions.htm](http://www.sgs.com/terms_and_conditions.htm) and for electronic format documents, subject to Terms and Conditions for Electronic Documents at [www.sgs.com/terms\\_e-document.htm](http://www.sgs.com/terms_e-document.htm). Attention is drawn to the limitation of liability, indemnification and jurisdiction issues defined therein. Any holder of this document is advised that information contained hereon reflects the Company's findings at the time of its intervention only and within the limits of Client's instructions, if any. The Company's sole responsibility is to its Client and this document does not exonerate parties to a transaction from exercising all their rights and obligations under the transaction documents. This document cannot be reproduced except in full, without prior written approval of the Company. Any unauthorized alteration, forgery or falsification of the content or appearance of this document is unlawful and offenders may be prosecuted to the fullest extent of the law. Unless otherwise stated the results shown in this test report refer only to the sample(s) tested.



## Mirex Testing Flow Chart

- 1) Name of the person who made testing: Bill Zhong
- 2) Name of the person in charge of testing: Susan Liu

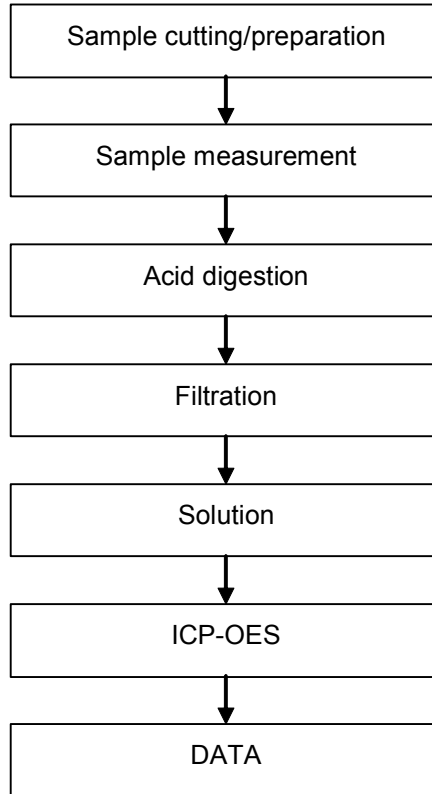


This document is issued by the Company subject to its General Conditions of Service printed overleaf, available on request or accessible at [http://www.sgs.com/terms\\_and\\_conditions.htm](http://www.sgs.com/terms_and_conditions.htm) and for electronic format documents, subject to Terms and Conditions for Electronic Documents at [www.sgs.com/terms\\_e-document.htm](http://www.sgs.com/terms_e-document.htm). Attention is drawn to the limitation of liability, indemnification and jurisdiction issues defined therein. Any holder of this document is advised that information contained hereon reflects the Company's findings at the time of its intervention only and within the limits of Client's instructions, if any. The Company's sole responsibility is to its Client and this document does not exonerate parties to a transaction from exercising all their rights and obligations under the transaction documents. This document cannot be reproduced except in full, without prior written approval of the Company. Any unauthorized alteration, forgery or falsification of the content or appearance of this document is unlawful and offenders may be prosecuted to the fullest extent of the law. Unless otherwise stated the results shown in this test report refer only to the sample(s) tested.



## Elementary Testing Flow Chart

- 1) Name of the person who made testing: Wesley Wei / Allen Xiao
- 2) Name of the person in charge of testing: Jeff Zhang

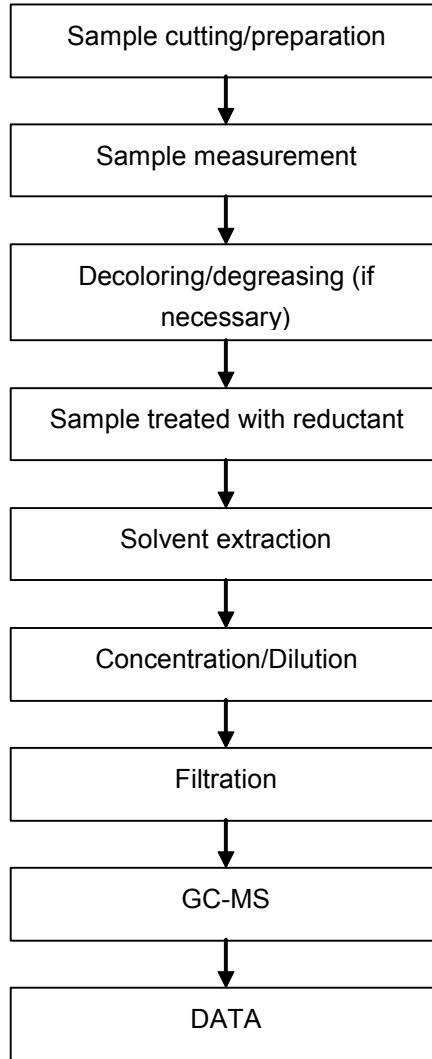


This document is issued by the Company subject to its General Conditions of Service printed overleaf, available on request or accessible at [http://www.sgs.com/terms\\_and\\_conditions.htm](http://www.sgs.com/terms_and_conditions.htm) and for electronic format documents, subject to Terms and Conditions for Electronic Documents at [www.sgs.com/terms\\_e-document.htm](http://www.sgs.com/terms_e-document.htm). Attention is drawn to the limitation of liability, indemnification and jurisdiction issues defined therein. Any holder of this document is advised that information contained hereon reflects the Company's findings at the time of its intervention only and within the limits of Client's instructions, if any. The Company's sole responsibility is to its Client and this document does not exonerate parties to a transaction from exercising all their rights and obligations under the transaction documents. This document cannot be reproduced except in full, without prior written approval of the Company. Any unauthorized alteration, forgery or falsification of the content or appearance of this document is unlawful and offenders may be prosecuted to the fullest extent of the law. Unless otherwise stated the results shown in this test report refer only to the sample(s) tested.

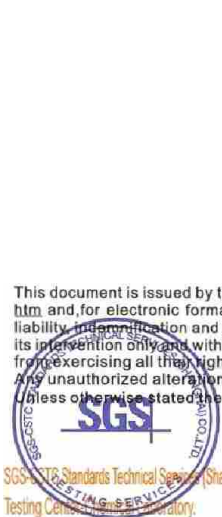


**AZO Testing Flow Chart**

- 1) Name of the person who made testing: Cissy Wang
- 2) Name of the person in charge of testing: Joan Ye



This document is issued by the Company subject to its General Conditions of Service printed overleaf, available on request or accessible at [http://www.sgs.com/terms\\_and\\_conditions.htm](http://www.sgs.com/terms_and_conditions.htm) and for electronic format documents, subject to Terms and Conditions for Electronic Documents at [www.sgs.com/terms\\_e-document.htm](http://www.sgs.com/terms_e-document.htm). Attention is drawn to the limitation of liability, indemnification and jurisdiction issues defined therein. Any holder of this document is advised that information contained hereon reflects the Company's findings at the time of its intervention only and within the limits of Client's instructions, if any. The Company's sole responsibility is to its Client and this document does not exonerate parties to a transaction from exercising all their rights and obligations under the transaction documents. This document cannot be reproduced except in full, without prior written approval of the Company. Any unauthorized alteration, forgery or falsification of the content or appearance of this document is unlawful and offenders may be prosecuted to the fullest extent of the law. Unless otherwise stated, the results shown in this test report refer only to the sample(s) tested.



Sample photo:



SGS authenticate the photo on original report only

\*\*\* End of Report \*\*\*

This document is issued by the Company subject to its General Conditions of Service printed overleaf, available on request or accessible at [http://www.sgs.com/terms\\_and\\_conditions.htm](http://www.sgs.com/terms_and_conditions.htm) and for electronic format documents, subject to Terms and Conditions for Electronic Documents at [www.sgs.com/terms\\_e-document.htm](http://www.sgs.com/terms_e-document.htm). Attention is drawn to the limitation of liability, indemnification and jurisdiction issues defined therein. Any holder of this document is advised that information contained hereon reflects the Company's findings at the time of its intervention only and within the limits of Client's instructions, if any. The Company's sole responsibility is to its Client and this document does not exonerate parties to a transaction from exercising all their rights and obligations under the transaction documents. This document cannot be reproduced except in full, without prior written approval of the Company. Any unauthorized alteration, forgery or falsification of the content or appearance of this document is unlawful and offenders may be prosecuted to the fullest extent of the law. Unless otherwise stated the results shown in this test report refer only to the sample(s) tested.

